



asi

LightStone

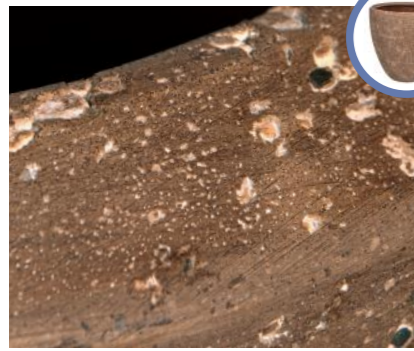
LightStone

Our Light Stone planters and wall panels are made from a combination of natural stone and resin, allowing them to become lighter and more manageable than raw stone would be. We have achieved three very natural looks with our Prairie Brown, Mountain Grey and Seaside Bisque finishes.

Light Stone planters include two perfectly shaped Floor Models, 2 elegant Tall Vases, and one unique Boat which is just the right size for reception desks and conference tables. All 5 of these items are available in all 3 finishes.

We have also designed wall panels for our new BioMontage line in the Prairie Brown and Mountain grey finishes. Now what you place on floors and tables can be tied visually to what you place on the walls!

All Light Stone products are for indoor use only. We also recommend using ASI Liners in the Light Stone Planters to insure water-tight performance.



PRAIRIE BROWN

When you look at paintings and photographs of the prairies around North America you see a diversity of landscapes, but they are all tied together by a common element of earth and stone interspersed throughout the widely variable foliage. It is from these scenes that our Prairie Brown finish was born. Its unique texture and subtle blend of earthy colors allows it to work well in almost any interior and with a wide array of plants.



MOUNTAIN GREY

Hiking in the mountains puts you back in touch with nature in a very special way. You see forests and streams and beautiful rock formations that all blend together to create a feeling of calmness and serenity. Our Mountain Grey finish is designed to bring that same feeling indoors! The gentle greys and touches of white with the subtle rock textures create a feeling of nature that we all appreciate and enjoy.



SEASIDE BISQUE

When you walk on a beach along almost any seashore in the world, if you look closely you find small pieces of pumice, a bisque-colored stone formed when volcanoes erupt, often on the sea floor. The pumice is broken up into small pieces and some of it washes ashore for us to find and enjoy. Our Seaside Bisque finish is designed to recreate this experience for us while we are at work! The subtle textures and soothing light color complement virtually any plant and any interior.

*Shown on Front Cover:
Boat in Mountain Grey with Rhipsalis
burchelli*

*Tall Vases in Prairie Brown with Dracaena Surculosa.
For indoor use.*



Floor Planters and Tall Vase in Prairie Brown with Spathiphyllum and Dracaena Surculosa. Includes BioMontage on wall in Prairie Brown LightStone, Lime Green and Medium Green Moss and Sustainable Bark, all in white frames. For indoor use.



Tall Vases and Boat in Seaside Bisque with Zamio culcas zamiifolia and Rhipsalis burchellii. For indoor use.

LIGHT STONE SPECIFICATIONS

| MODEL # | FINISH NAME | OUTSIDE (INCHES) | | INSIDE DIAMETER | ASI LINER | GROW POT | ASI SUB |
|--------------|----------------|------------------|----|-----------------|-----------|----------|-----------|
| FLOOR MODELS | | | | | | | |
| | | D | H | | | | |
| LSR-1616-PB | Prairie Brown | 16 | 16 | 13.75 | LN-1611 | 10", 12" | SUB-10/12 |
| LSR-1616-MG | Mountain Grey | 16 | 16 | 13.75 | LN-1611 | 10", 12" | SUB-10/12 |
| LSR-1616-SB | Seaside Bisque | 16 | 16 | 13.75 | LN-1611 | 10", 12" | SUB-10/12 |
| LSR-2020-PB | Prairie Brown | 20 | 20 | 17.5 | LN-1813 | 14" | SUB-14 |
| LSR-2020-MG | Mountain Grey | 20 | 20 | 17.5 | LN-1813 | 14" | SUB-14 |
| LSR-2020-SB | Seaside Bisque | 20 | 20 | 17.5 | LN-1813 | 14" | SUB-14 |

| TALL VASES | | | | | | | |
|--------------|----------------|------|-------|-------|---------|-----|--------|
| LSTV-1536-PB | Prairie Brown | 14.5 | 35.5 | 11.25 | LN-1108 | 10" | SUB-10 |
| LSTV-1536-MG | Mountain Grey | 14.5 | 35.5 | 11.25 | LN-1108 | 10" | SUB-10 |
| LSTV-1536-SB | Seaside Bisque | 14.5 | 35.5 | 11.25 | LN-1108 | 10" | SUB-10 |
| LSTV-2047-PB | Prairie Brown | 20 | 47.25 | 16 | LN-1813 | 14" | SUB-14 |
| LSTV-2047-MG | Mountain Grey | 20 | 47.25 | 16 | LN-1813 | 14" | SUB-14 |
| LSTV-2047-SB | Seaside Bisque | 20 | 47.25 | 16 | LN-1813 | 14" | SUB-14 |

| BOAT-SHAPED OVALS | | L/W | H | INSIDE HEIGHT | PLANTING GUIDELINES |
|-------------------|----------------|-------|---|---------------|--------------------------------------|
| LSBT-271307-PB | Prairie Brown | 27/13 | 7 | 3-5 | Line with 1 mm plastic, direct plant |
| LSBT-271307-MG | Mountain Grey | 27/13 | 7 | 3-5 | Line with 1 mm plastic, direct plant |
| LSBT-271307-SB | Seaside Bisque | 27/13 | 7 | 3-5 | Line with 1 mm plastic, direct plant |

| BIOMONTAGE WALL PANELS IN LIGHT STONE FINISHES | | L/W | DEPTH |
|--|---------------|-------|-------|
| BM-LSWS-2424-PB | Prairie Brown | 23/23 | 3 |
| BM-LSWR-1224-PB | Prairie Brown | 11/23 | 3 |
| BM-LSWS-2424-MG | Mountain Grey | 23/23 | 3 |
| BM-LSWR-1224-MG | Mountain Grey | 11/23 | 3 |

For Indoor Use. Use ASI liners with planters.



PRAIRIE BROWN



MOUNTAIN GREY



SEASIDE BISQUE

Produced and distributed by:



www.asiearthforms.com

EAST COAST:

Architectural Supplements
Corporate Headquarters
567-1 South Leonard Street,
Waterbury, CT 06708

Customer Service: 800-548-9610
or call 203-591-5505

www.asiearthforms.com

